

19 WARSAW 76
ELEMENTARY



Jennifer Faison Kelly, PhD
Professor and
Associate Dean of
Clinical Partnerships
Capital University

March 17, 2021



Greetings from Capital University!



Dr. Jim Wightman
Dean, School of Education
jwightman@capital.edu
614.236.6264



Dr. Jennifer Faison Kelly
Associate Dean of Clinical Partnerships
jkelly@capital.edu
614.236.6569

**Capital
University**



Sara Lucas, M.F.A
Assistant Director of Admission
slucas35@capital.edu
614.236.6199



Beth Sweeney
Program Coordinator
esweeney@capital.edu
614.236.6302

Licenses Offered

- **Early Childhood/Elementary Education**
(grades pre-K-5 / ages 3-9)
- **Middle Childhood**
(grades 4-9 / ages 8-14)
 - Mathematics
 - Language arts
 - Science
 - Social studies
- **Multi-Age**
(grades pre-K-12 / ages 3-21)
 - Music Education
 - Vocal
 - Instrumental
 - Visual Arts
 - Intervention Specialist (grades K-12 / ages 5-21)
 - Mild/Moderate
- **Adolescent to Young Adult (AYA)**
(grades 7-12 / ages 12-21)
 - Chemistry
 - Dual area science
 - Integrated Language Arts
 - Integrated Mathematics
 - Integrated Sciences
 - Integrated Social Studies
 - *History focus*
 - *Political Science focus*
- **Endorsement Programs**
 - Middle School Generalist
 - Reading Endorsement
 - graduate level
 - TESOL (Teaching English to Speakers of Other Languages)
 - graduate level

Meet the School of Education Faculty



Kevin Sayers, Ph.D.
Professor; Associate
Dean for Graduate
Programs/School of Ed.



Sally Creasap, Ph.D.
Professor
Elementary Education



Martha Michael, Ph.D.
Professor/Homer and Isabelle
Cotterman Endowed Chair
Intervention Specialist



Bradley Conrad, Ph.D.
Associate Professor
English Language Arts



Olga Shonia, Ph.D.
Associate Professor
EDUC 101/151/TESOL



Hoyun Cho, Ph.D.
Associate Professor
Math Education



Carmen Dixon, Ph.D.
Assistant Professor
Science Education



Nisreen Daoud, Ph. D.
Assistant Professor
Elementary Education



Work with faculty members as part of the Tales from the First Year Project:

- ✓ Three year post-graduate mentorship in small cohorts
- ✓ Faculty mentors
- ✓ Opportunities to publish on an award-winning blog
- ✓ Become a mentor to new teachers in years two and three
- ✓ Build your professional network
- ✓ Emerge as leaders in the K-12 education

More Information Contact: Brad M. Conrad, Ph. D. bconrad2@capital.edu (614) 282-8268

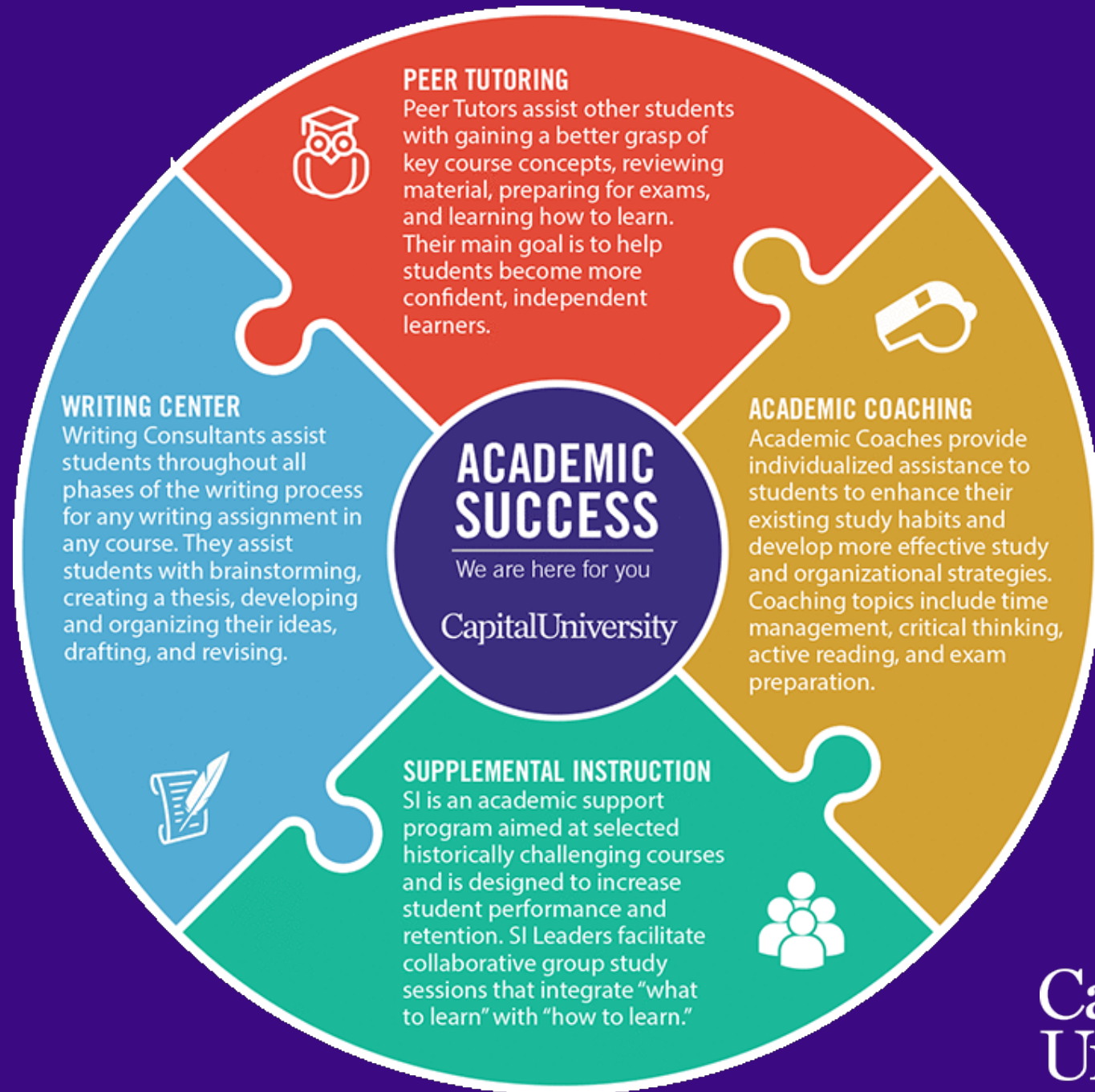


Education is the most powerful weapon
which you can use to change the world

REFERENCE

The hardest thing about learning
is not sitting alone at a desk from you

Backstage
Library





CARDIO



STRENGTH

Achieve your

Octane
FITNESS

Flexdeck Shock Absorption System

Flexdeck Shock Absorption System

Cost and Financial Aid

Tuition

- 2020-2021 Academic Year - **\$514** per credit hour
- Billed per credit hour, no flat fees for full and part time
- \$110 technology fee + \$110 health and wellness fee per year for full-time students
- **2021-2022 Academic Year - \$527 per credit hour**

Federal Financial Aid

- Eligible for Federal Direct Loans (subsidized and unsubsidized based on need)
- Borrowing capped at \$12,500 per year for independent students with bachelors' degrees
- Capital School Code: 003023
- www.fafsa.ed.gov

Summer 2021 courses

❑ EDUC 101-01M1 Developing as a Professional I	May 10-June 11	Shonia	1 credit
❑ EDUC 151-01M1 Foundations of the Ed. Profession	May 10-June 11	Shonia	3 credit
❑ EDUC 201-C01M1-Developing as a Professional II	May 17-July 2	Conrad	4 credits
❑ EDUC 231-01M1-Introduction to Exceptionalities	May 10-June 11	Kelly	4 credits
❑ EDUC 231-01M2-Introduction to Exceptionalities	June 14-July 16	Kelly	4 credits
❑ EDUC 374-01M1-Content Area Literacy	May 17-July 2	Conrad	4 credits
❑ MATH 140-01M1- Integrated Mathematics I	May 24-June 18	Cho	4 credits
❑ MATH 141-01M2- Integrated Mathematics II	May 24-June 18	Cho	4 credits

ALL of these are online!

Note: These are just a few Education options.

Outside Scholarships

- <https://www.fastweb.com/>
- <https://studentaid.gov/>
 - where you will find info about TEACH grants
- <https://www.goodcall.com/scholarships/>
- <https://bigfuture.collegeboard.org/scholarship-search>

Start the Process - Contact Us!!!

Specialized Program for Columbus City Schools:

- Do you have a college degree?
- Do you have some college courses?
- What are your ACT/SAT scores?
- Have you taken the Praxis Core exam
- What is your licensure focus?
- Do you prefer weekends, nights, summers to take courses?
- Do you prefer online, hybrid, or face to face? courses?
- Do you prefer Graeters, Jeni's, or Johnson's ice cream?

Build It and They will Come !!

